

Explosion Proof Servo Motors



ENGINEERING YOUR SUCCESS.



WARNING – USER RESPONSIBILITY

FAILURE OR IMPROPER SELECTION OR IMPROPER USE OF THE PRODUCTS DESCRIBED HEREIN OR RELATED ITEMS CAN CAUSE DEATH, PERSONAL INJURY AND PROPERTY DAMAGE.

- This document and other information from Parker-Hannifin Corporation, its subsidiaries and authorized distributors provide product or system options for further investigation by users having technical expertise.
- The user, through its own analysis and testing, is solely responsible for making the final selection of the system and components and assuring that all performance, endurance, maintenance, safety and warning requirements of the application are met. The user must analyze all aspects of the application, follow applicable industry standards, and follow the information concerning the product in the current product catalog and in any other materials provided from Parker or its subsidiaries or authorized distributors.
- To the extent that Parker or its subsidiaries or authorized distributors provide component or system options based upon data or specifications provided by the user, the user is responsible for determining that such data and specifications are suitable and sufficient for all applications and reasonably foreseeable uses of the components or systems.

Standards

Hazardous Areas Classification	6
Compliance with China Standards.....	7
Operating category and marking of EY servomotors	8
Operating category and marking of EX servomotors	9

Explosion Proof Motor for Zone 2 - EY Series



Overview.....	11
EY Servo Motors - CE Marked for Explosive Atmospheres	12
Drive Associations.....	14
Dimensions	16
Order Code.....	17

Explosion Proof Motor for Zone 1 - EX Series



Overview.....	19
EX Servo Motors - CE Marked for Explosive Atmospheres	20
Drive Associations.....	22
Dimensions (Resolver Version)	24
Order Code.....	26
Additional Information.....	28
Feedback Sensors.....	28
Shaft Loads for CE Motors.....	28

Series	EY		EX	
				
	www.parker.com/eme/ey		www.parker.com/eme/ex	
	page 11		page 19	
Marking	ATEX		ATEX/IECEX, KOSHA	
EX Zone	Zone 2 / 22		Zone 1 / 21	
Classification	Gas or Dust		Gas or Dust	
Torque	1.8 to 41 Nm		1.75 to 35 Nm	
Max Speed	6 800 min ⁻¹		6 800 min ⁻¹	
Ingress protection level	IP65		IP65	
Power Supply	230 - 400 VAC		230 - 400 VAC	
Conformance	ATEX 2014/34/EU Directive		ATEX 2014/34/EU Directive	
			CNCA-C23-01 2019 CNEX-C2301-2019	

Standards

Hazardous Areas Classification

Dangerous Areas Identification

European directive 99/92/EC makes explicit the responsibility of employers to protect employees who may be exposed to risk of ATEX environments (Explosive Atmosphere). The employer must assess the risk and classify potentially dangerous areas. Equipment and materials must also be suited for use in dangerous areas in accordance with ATEX directive 2014/34/EU.

Hazard	Permanent	EX Series	
		Occasional	EY Series Unusual
Definition	Explosive atmospheres present continuously, for long periods or frequently	Explosive atmospheres are likely to occur	Explosive atmospheres are unlikely to occur or present only infrequently and for a short period only
Gas and vapour	Zone 0	Zone 1	Zone 2
Dust	Zone 20	Zone 21	Zone 22
Category	1 Very high level of protection	2 High level of protection	3 Normal level of protection

 Suitable for ATEX/IECEX Parker servomotors

Classification of common combustible gases and vapours according to temperature class and explosion group

T° Class	Group	EX Series					
		EY Series			T4	T5	T6
		T1	T2	T3	T4	T5	T6
I	I	Methane					
		Acetic acid Acetone Ammonia Benzene Carbon monoxide Ethane Ethyl... Methane Methanol Methyl... Naphthalene Propane Toluene Xylene	Butyl acetate Amylic alcohol Liquefied gas Natural gas Butane Ethyl alcohol	Cyclohexane Cyclohexanol Diesel fuels Gasoline Heptane Hexane Pentane Petroleum (depending on composition)	Acetaldehyde Ether		
		Coke gas	Butadiene Ethylene Ethylbenzene Ethylene oxide	Hydrogen sulphide Isoprene Petroleum (depending on composition)	Ethyl ether		
		Hydrogen	Acetylene				Carbon disulphide Ethyl nitrate

Compliance with China Standards



Marking	CCC
Conformance	CNCA-C23-01 2019 CNEX-C2301-2019
Standards	GB3836.1-2010 GB3836.2-2010 GB12476.1-2013 GB12476.5-2013
Marking	Ex d IIB T4 Gb IP64 (Gas) Ex d IIB T4 Gb, Ex tD A21 IP65 T135°C (Gas or Dust)
Ingress protection level	IP65 (Gas or dust)

CCC: "CCC" motors have exactly the same construction as IECEx motors (with the exception of a specific nameplate). They are intended for use in the same areas (gas or dust) and have the same degree of safety. Refer to standards GB3836.1-2010, GB3836.2-2010, GB12476.1-2013, GB12476.5-2013 for more details.

Operating category and marking of EY servomotors



ATEX gaseous atmospheres

II 3 G Ex nA IIC T3 Gc IP65

II	3	G	Ex	nA	II	C	T3*	Gc	IP65	
I Mine	M1 Very high level of protection	G Gas Vapour	Protection against explosions	nC Equipment with protection against sparks	I Mine	Methane	T1 450 °C	Ma Very high level of protection	IP65	
	M2 High level of protection			nR Equipment with restricted breathing			T2 300 °C	Mb High level of protection		
II Surface	1 Very high level of protection			nA Equipment not generating sparks	II Surface	A Propane	T3 200 °C	Ga Very high level of protection		
	2 High level of protection						B Ethylene	T4 135 °C		Gb High level of protection
	3 Normal level of protection							C Hydrogen Acetylene		T5 100 °C
							T6 85 °C			

* Maximum surface temperature

ATEX dusty atmospheres

II 3 GD Ex nA IIC T3 Gc IP65 / Ex tc IIIC T200°C Dc IP65

II	3	D	Ex	tc	III	C	T3*	Dc	IP65	
I Mine	M1 Very high level of protection	D Dust	Protection against explosions	ta Protection by enclosure	III Dust	A Combustible flying	T1 450 °C	Ma Very high level of protection	IP65	
	M2 High level of protection			tb/tc Protection by enclosure			T2 300 °C	Mb High level of protection		
II Surface	1 Very high level of protection			pb/pc pressurized enclosure		II Surface	B Non-conductive dust	T3 200 °C		Da Very high level of protection
	2 High level of protection							C Conductive dust		T4 135 °C
	3 Normal level of protection						ma/mb/mc Encapsulation			T5 100 °C
								T6 85 °C		

Suitable for ATEX Parker EY servomotors

Operating category and marking of EX servomotors

ATEX/IECEX gaseous atmospheres



II 2 G Ex db IP65 – Group IIA or IIB – category 2G – zone 1 and 2.

II	2	G	Ex	db	II	B	T4*	Gb	IP65
I Mine	M1 Very high level of protection	G Gas Vapour	Protection against explosions	o Oil immersion	I Mine	Methane	T1 450 °C	Ma Very high level of protection	IP65
	M2 High level of protection			p Pressurized apparatus			T2 300 °C	Mb High level of protection	
II Surface	1 Very high level of protection			db Flameproof enclosure	II Surface	A Propane	T3 200 °C	Ga Very high level of protection	
	2 High level of protection			e Increased safety		B Ethylene	T4 135 °C	Gb High level of protection	
	3 Normal level of protection			m Encapsulation		C Hydrogen Acetylene	T5 100 °C	Gc Normal level of protection	
				i Intrinsic safety			T6 85 °C		

* Maximum surface temperature

ATEX/IECEX dusty atmospheres

III 2 D Ex tb IP65 - category 2D – zone 21 and 22

II	2	D	Ex	tb	III	C	T135°C*	Db	IP65	
I Mine	M1 Very high level of protection	D Dust	Protection against explosions	ta Protection by enclosure	III Dust	A Combustible flying	T1 450 °C	Ma Very high level of protection	IP65	
	M2 High level of protection			tb/tc Protection by enclosure			T2 300 °C	Mb High level of protection		
II Surface	1 Very high level of protection			pb/pc pressurized enclosure		III Dust	B Non-conductive dust	T3 200 °C		Da Very high level of protection
	2 High level of protection			ia/ib/ic intrinsic safety				T4 135 °C		Db High level of protection
	3 Normal level of protection			ma/mb/mc Encapsulation			C Conductive dust	T5 100 °C		Dc Normal level of protection
								T6 85 °C		

 Suitable for ATEX/IECEX Parker EX servomotors

Explosion Proof Motor for Zone 2 - EY Series

Overview

Description

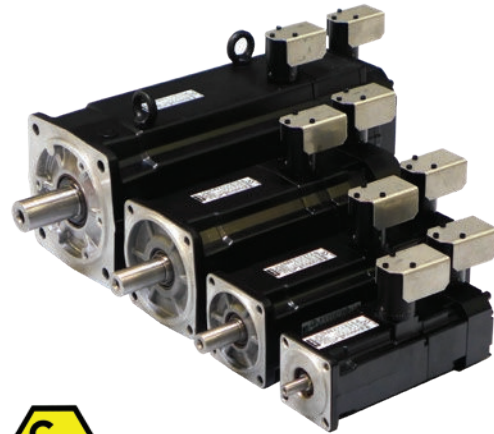
The EY series is a range of permanent magnet explosion-proof brushless servo motors designed for use in **explosive atmospheres in zone 2** for gas and dust at 40°C or 60°C ambient temperature. The EY series of servo motors are characterized by excellent motion quality, dynamic acceleration/deceleration capabilities and high torque output over a wide speed range. Various winding variants and numerous options are available to offer maximum flexibility. This range is in accordance with the European (CE) and International safety standards.

Advantages

- Brushless servo motors with explosion proof certification from a notified body.
- Conforming with CE/ATEX and International safety standard
- For an ambient temperature at 40°C or 60°C
- For gas and dust explosive atmospheres
- High precision
- High motion quality
- High dynamic performance
- Low cogging
- Compactness and robustness
- Maintenance free
- High power density (6 kW in a 155 square frame)
- Compatible with all popular drives

Applications

- Printing machinery
- Paint spray equipments
- Chemical, petro-chemical and pharmaceutical industries
- Robot applications
- Special machines
- Cleaning applications
- Actuator for valve in Energy applications
- Waste processing plants

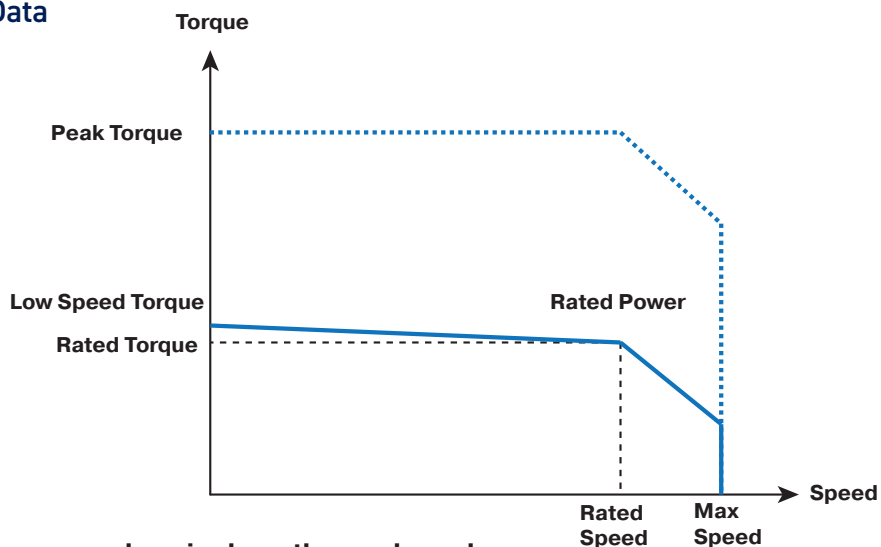


Technical characteristics

Motor type	Permanent magnet synchronous motors
Frame size	70 - 155 mm
Torque range	1.8 to 41 Nm
Speed range	Up to 6800 min ⁻¹
Number of poles	10
Mounting	Flange with smooth holes
Marking	CE / ATEX
Voltage supply	230 / 400 VAC
Conformance	ATEX 2014/34/EU Directive IEC/EN60034-1 IEC/EN60034-5 IEC/EN60079-0 IEC/EN60079-15 (Gas) IEC/EN60079-31 (Dust)
Classification	II 3 GD Ex nA IIC T3 Gc IP65 / Ex tc IIIC T200°C Dc IP65 (Gas or dust)
Ingress protection level	IP65
Connections	Connector

EY Servo Motors - CE Marked for Explosive Atmospheres

Technical Data



230 VAC power supply - single or three-phased

Motor	Rated Power P _n	Rated Torque M _n	Rated Speed N _n	Rated Current I _n	Low speed torque M ₀	Low Speed Current I ₀	Peak Torque M _{peak}	Peak Current I _{peak}	Max. Speed N _{max}
	[kW]	[Nm]	[rpm]	[Arms]	[Nm]	[Arms]	[Nm]	[Arms]	[rpm]
40°C ambient temperature									
EY310EAP	0.46	1.9	2300	1.4	2	1.4	4.7	3.6	2300
EY310EAK	0.72	1.7	4000	2.2	2	2.5	4.72	6.25	4000
EY420EAP	0.9	3.8	2300	2.7	4	2.8	9.47	7.03	2300
EY420EAJ	1.4	3.4	4000	4.2	4	4.9	9.47	12.2	4000
EY430EAL	1.2	5.0	2300	3.5	5.5	3.8	13.1	9.4	2300
EY430EAF	1.7	4.1	4000	5.1	5.5	6.6	13.1	16.5	4000
EY620EAV	0.9	7.9	1100	2.8	8	2.8	18.9	7.04	1100
EY620EAR	1.7	7.4	2200	5.0	8	5.3	18.9	13.2	2200
EY630EAR	1.7	11.3	1450	5.2	12	5.5	28.4	13.7	1450
EY630EAN	2.5	10.5	2300	7.3	12	8.3	28.4	20.6	2300
EY820EAR	3.3	14.5	2200	9.7	16	10.7	36.8	26.7	2200
EY840EAK	4.9	23.5	2000	13.7	28	16.2	65.8	40.4	2000
EY860EAJ	5.2	34.4	1450	14.9	41	17.7	96.7	44.2	1450
60°C ambient temperature									
EY310EAP	0.40	1.7	2300	1.2	1.8	1.3	4.3	3.21	2300
EY310EAK	0.61	1.5	4000	1.9	1.8	2.3	4.3	5.62	4000
EY420EAP	0.8	3.1	2300	2.2	3.5	2.5	8.39	6.14	2300
EY420EAJ	1.1	2.7	4000	3.4	3.5	4.3	8.39	10.6	4000
EY430EAL	1.1	4.4	2300	3.1	5.0	3.4	12	8.54	2300
EY430EAF	1.4	3.4	4000	4.2	5.0	6.0	12	15	4000
EY620EAV	0.8	7.0	1100	2.5	7.2	2.5	17.3	6.33	1100
EY620EAR	1.5	6.4	2200	4.3	7.2	4.8	17.3	11.9	2200
EY630EAR	1.5	10.1	1450	4.6	10.8	4.9	25.9	12.3	1450
EY630EAN	2.2	9.1	2300	6.3	10.8	7.4	25.9	18.6	2300
EY820EAR	2.7	11.7	2200	7.9	14.0	9.3	32.9	23.3	2200
EY840EAK	3.9	18.4	2000	10.8	25.5	14.7	60.8	36.8	2000
EY860EAJ	4.4	29.0	1450	12.6	37.0	15.9	88.5	39.8	1450

400 VAC power supply - three-phased

Motor	Rated Power Pn	Rated Torque Mn	Rated Speed Nn	Rated Current In	Low speed torque Mo	Low Speed Current Io	Peak Torque M peak	Peak Current I peak	Max. Speed N max
	[kW]	[Nm]	[rpm]	[Arms]	[Nm]	[Arms]	[Nm]	[Arms]	[rpm]
40°C ambient temperature									
EY310EAP	0.72	1.7	4000	1.3	2	1.4	4.72	3.58	4000
EY310EAK	0.87	1.2	6800	1.6	2	2.5	4.72	6.25	6800
EY420EAP	1.1	3.6	3000	2.6	4	2.8	9.47	7.03	3000
EY420EAJ	1.7	2.6	6000	3.4	4	4.9	9.47	12.2	6000
EY430EAL	1.7	4.1	4000	2.9	5.5	3.8	13.1	9.4	4000
EY430EAF	1.6	2.7	5800	3.4	5.5	6.6	13.1	16.5	5800
EY620EAV	1.6	7.5	2000	2.7	8	2.8	18.9	7.04	2000
EY620EAR	2.5	6.2	3900	4.2	8	5.3	18.9	13.2	3900
EY630EAR	2.8	10.0	2700	4.6	12	5.5	28.4	13.7	2700
EY630EAN	3.3	7.9	4000	5.6	12	8.3	28.4	20.6	4000
EY820EAR	5.3	12.9	3900	8.8	16	10.7	36.8	26.7	3900
EY840EAK	6.8	18.6	3500	11.0	28	16.2	65.8	40.4	3500
EY860EAJ	6.3	23.0	2600	10.2	41	17.7	96.7	44.2	2600
60°C ambient temperature									
EY310EAP	0.61	1.5	4000	1.1	1.8	1.3	4.3	3.21	4000
EY310EAK	0.67	0.9	6800	1.3	1.8	2.3	4.3	5.62	6800
EY420EAP	0.9	3.0	3000	2.1	3.5	2.5	8.39	6.14	3000
EY420EAJ	1.2	2.0	6000	2.6	3.5	4.3	8.39	10.6	6000
EY430EAL	1.4	3.4	4000	2.4	5.0	3.4	12	8.54	4000
EY430EAF	1.3	2.6	4900	3.3	5.0	6.0	12	15	4900
EY620EAV	1.4	6.5	2000	2.3	7.2	2.5	17.3	6.33	2000
EY620EAR	2.0	4.9	3900	3.3	7.2	4.8	17.3	11.9	3900
EY630EAR	2.4	8.4	2700	3.9	10.8	4.9	25.9	12.3	2700
EY630EAN	2.4	5.8	4000	4.1	10.8	7.4	25.9	18.6	4000
EY820EAR	3.2	7.8	3900	5.4	14.0	9.3	32.9	23.3	3900
EY840EAK	3.9	14.1	2600	8.4	25.5	14.7	60.8	36.8	2600
EY860EAJ	4.8	21.8	2100	9.6	37.0	15.9	88.5	39.8	2100

Drive Associations

230 VAC power supply

Motor	Associated Drive Sizes ⁽¹⁾			
	PSD1 ⁽²⁾	Compax3	SLVD-N	AC890
With 40°C ambient temperature - 230 VAC power supply				
EY310EAP	PSD1SW1200...	C3S025V2...	SLVD2N...	890SD-231300B...
EY310EAK	PSD1SW1300...	C3S025V2...	SLVD5N...	890SD-231550B...
EY420EAP	PSD1SW1300...	C3S063V2...	SLVD5N...	890SD-231700B...
EY420EAJ	PSD1SW1300...	C3S063V2...	SLVD5N...	890SD-231700B...
EY430EAL	PSD1SW1300...	C3S063V2...	SLVD5N...	890SD-231700B...
EY430EAF	-	C3S100V2...	SLVD7N...	890SD-232165B...
EY620EAV	PSD1SW1300...	C3S063V2...	SLVD5N...	890SD-231550B...
EY620EAR	-	C3S063V2...	SLVD7N...	890SD-231700B...
EY630EAR	-	C3S063V2...	SLVD7N...	890SD-232165B...
EY630EAN	-	C3S100V2...	SLVD10N...	890SD-232165B...
EY820EAR	-	C3S150V2...	SLVD15N...	890SD-232240C...
EY840EAK	-	-	-	890SD-232240C...
EY860EAJ	-	-	-	890SD-232240C...
With 60°C ambient temperature - 230 VAC power supply				
EY310EAP	PSD1SW1200...	C3S025V2...	SLVD2N...	890SD-231300B...
EY310EAK	PSD1SW1300...	C3S025V2...	SLVD5N...	890SD-231550B...
EY420EAP	PSD1SW1300...	C3S063V2...	SLVD5N...	890SD-231550B...
EY420EAJ	PSD1SW1300...	C3S063V2...	SLVD5N...	890SD-231700B...
EY430EAL	PSD1SW1300...	C3S063V2...	SLVD5N...	890SD-231700B...
EY430EAF	-	C3S063V2...	SLVD7N...	890SD-232165B...
EY620EAV	PSD1SW1300...	C3S025V2...	SLVD5N...	890SD-231550B...
EY620EAR	-	C3S063V2...	SLVD5N...	890SD-231700B...
EY630EAR	-	C3S063V2...	SLVD5N...	890SD-231700B...
EY630EAN	-	C3S100V2...	SLVD10N...	890SD-232165B...
EY820EAR	-	C3S100V2...	SLVD10N...	890SD-232165B...
EY840EAK	-	C3S150V2...	SLVD15N...	890SD-232240C...
EY860EAJ	-	-	-	890SD-232240C...

⁽¹⁾Ambient temperature for the drives is 40°C

⁽²⁾PSD drive with optional resolver board only

400 VAC power supply

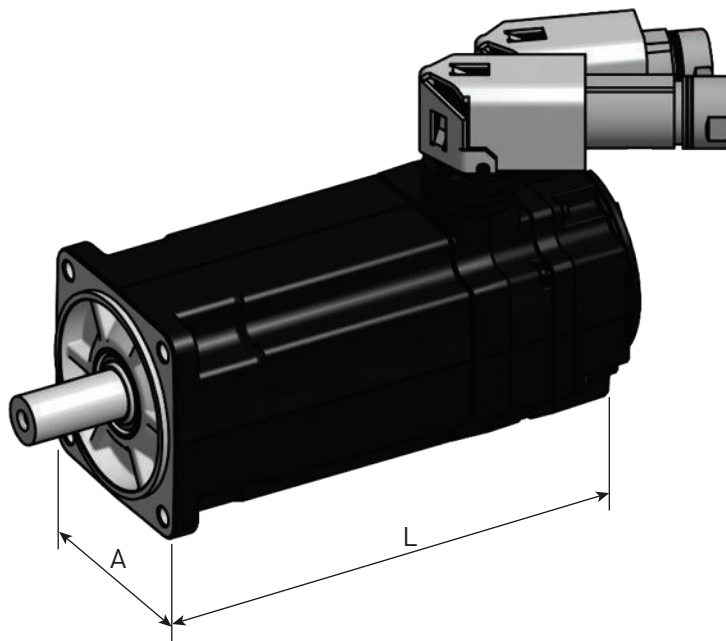
Motor	Associated Drive Sizes ⁽¹⁾			
	PSD1 ⁽²⁾	Compax3	AC890	AC30V
With 40°C ambient temperature - 400 VAC power supply				
EY310EAP	PSD1MW1300...	C3S015V4...	890SD-531200B...	31V-4D-0004
EY310EAK	PSD1MW1300...	C3S038V4...	890SD-531350B...	31V-4D-0004
EY420EAP	PSD1MW1300...	C3S038V4...	890SD-531450B...	31V-4D-0004
EY420EAJ	PSD1MW1300...	C3S075V4...	890SD-532100B...	31V-4D-0008
EY430EAL	PSD1MW1300...	C3S038V4...	890SD-532100B...	31V-4D-0005
EY430EAF	PSD1MW1400...	C3S075V4...	890SD-532120B...	31V-4D-0008
EY620EAV	PSD1MW1300...	C3S038V4...	890SD-531450B...	31V-4D-0004
EY620EAR	PSD1MW1400...	C3S075V4...	890SD-532100B...	31V-4D-0008
EY630EAR	PSD1MW1400...	C3S075V4...	890SD-532100B...	31V-4D-0008
EY630EAN	PSD1MW1600...	C3S150V4...	890SD-532120B...	31V-4D-0010
EY820EAR	PSD1MW1600...	C3S150V4...	890SD-532160B...	31V-4D-0012
EY840EAK	PSD1MW1800...	C3S300V4...	890SD-53216SB...	31V-4E-0023
EY860EAJ	PSD1MW1800...	C3S300V4...	890SD-532240C...	31V-4E-0023
With 60°C ambient temperature - 400 VAC power supply				
EY310EAP	PSD1MW1300...	C3S015V4...	890SD-531200B...	31V-4D-0004
EY310EAK	PSD1MW1300...	C3S038V4...	890SD-531350B...	31V-4D-0004
EY420EAP	PSD1MW1300...	C3S038V4...	890SD-531450B...	31V-4D-0004
EY420EAJ	PSD1MW1300...	C3S075V4...	890SD-531600B...	31V-4D-0006
EY430EAL	PSD1MW1300...	C3S038V4...	890SD-531450B...	31V-4D-0005
EY430EAF	PSD1MW1400...	C3S075V4...	890SD-532100B...	31V-4D-0008
EY620EAV	PSD1MW1300...	C3S038V4...	890SD-531350B...	31V-4D-0004
EY620EAR	PSD1MW1300...	C3S075V4...	890SD-532100B...	31V-4D-0008
EY630EAR	PSD1MW1300...	C3S075V4...	890SD-532100B...	31V-4D-0008
EY630EAN	PSD1MW1400...	C3S075V4...	890SD-532120B...	31V-4D-0010
EY820EAR	PSD1MW1600...	C3S150V4...	890SD-532160B...	31V-4D-0012
EY840EAK	PSD1MW1600...	C3S150V4...	890SD-53216SB...	31V-4E-0023
EY860EAJ	PSD1MW1800...	C3S300V4...	890SD-53216SB...	31V-4E-0023

⁽¹⁾Ambient temperature for the drives is 40°C

⁽²⁾PSD drive with optional resolver board only

Dimensions

EY



Motor	A	Mounting Flange centering / interaxis hole	Shaft diameter x length	Without Brake		With Brake	
	[mm]	[mm]	[mm]	L [mm]	Weight [kg]	L [mm]	Weight [kg]
EY310	71	60 / 75-80	11 x 23	159	2	207	2.4
EY420	91.5	80 / 100	19 x 40	181	3.7	232	4.5
EY430				206	4.6	257	5.4
EY620	121	110 / 130	24 x 50	195	6.9	249	8
EY630				224	8.8	278	10
EY820	155	130 / 165	32 x 58	213	13	279	16.5
EY840				273	20	339	23.5
EY860				333	27	399	30.5

Order Code

EY Motors

	1	2	3	4	5	6	7	8	9	10
Order example	EY	3	10	E	A	K	B	7	1	10

1	Product Series
EY	Atex servo motor Zone 2
2	Motor size
3	71 mm square
4	92 mm square
6	121 mm square
8	155 mm square
3	Motor length
10	up to 60 depending on size
4	Fixed code
E	ATEX motor
5	Feedback sensor
A	2 pole resolver
K	Without sensor
6	Torque/Speed characteristics
	see table "Technical data"
	...
7	Painting
B	Black RAL9005
8	Electric connection
7	Connector
9	Brake and thermal sensor option*
	PTC on power connector (AC890,AC30V,...)
1	PTC sensor
4	PTC sensor + brake
	PTC on feedback connector (PSD,Compax3,SLVD,...)
A	PTC sensor
D	PTC sensor + brake
10	Mechanical interface
10	IP65 with smooth shaft
11	IP65 with keyed shaft

* other options on request

Cables

Motor cable

Drive	Cable reference	
	Current ≤ 12 A @40°C Current ≤ 9 A @60°C	Current ≤ 24 A @40°C Current ≤ 17 A @60°C
PSD1S, PSD1M18	CBM015HB-C04-D01-xxxx-00	CP1UQ2F1R0xxx
PSD1M (except M18)	CBM015HB-C04-D02-xxxx-00	CP1UQ2F1R0xxx
Compax3	CBM015HB-C04-D01-xxxx-00	CC3UQ2F1R0xxx
SLVDN	CS5UQ1F1R0xxx	CS5UQ2F1R0xxx
AC890	CS4UQ1F1R0xxx	CS4UQ2F1R0xxx
AC30	CS7UQ1F1R0xxx	CS7UQ2F1R0xxx

Feedback cable (2 pole resolver)

Drive	Cable reference
PSD1	CBFRE0H0-C07-D03-xxxx-00
Compax3	CC3UA1F1R0xxx
SLVDN	CS5UA1F1R0xxx
AC890	CS4UA1F1R0xxx
AC30	CS7UA1F1R0xxx

For non-standard length cable with length different from: 3/5/10/15/20/25/30/50m please contact us.

Explosion Proof Motor for Zone 1 - EX Series

Overview

Description

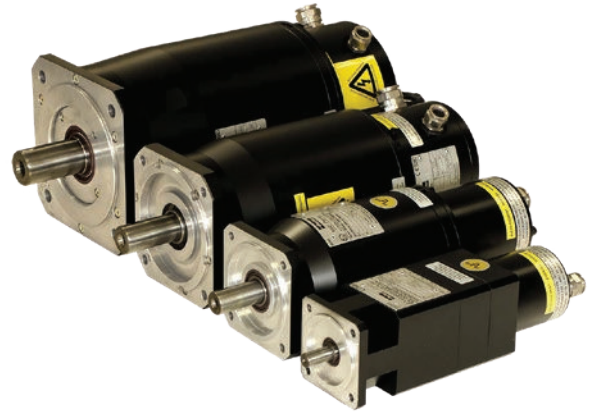
EX series is a range of permanent magnet servo motor designed for use in zone 1 explosive atmospheres. Featuring robust explosion-proof housings, EX motors are capable of bearing internal explosions with no risks of propagation to the neighbouring environment. EX servomotors are characterized by excellent motion quality, great acceleration / deceleration capabilities, and high torque output over a wide speed range. Various winding variants and numerous options are available to offer maximum flexibility.

Advantages

- Servo motors with explosion proof enclosure "d"
- Conforming with CE/ATEX and IECEx
- For an ambient temperature at 40°C or 60°C
- For gas and dust explosive atmospheres
- High precision
- High motion quality
- High dynamic performance
- Low cogging
- Compactness and robustness
- Maintenance free
- High power density (6 kW in a 155 square frame)
- Compatible with all popular drives

Applications

- Printing machinery
- Packaging, filling machines
- Painting robots
- Coating machines
- Chemical, petro-chemical and pharmaceutical industries
- Robot applications
- Special machines
- Cleaning applications
- Actuator for valve in Energy applications
- Waste processing plants



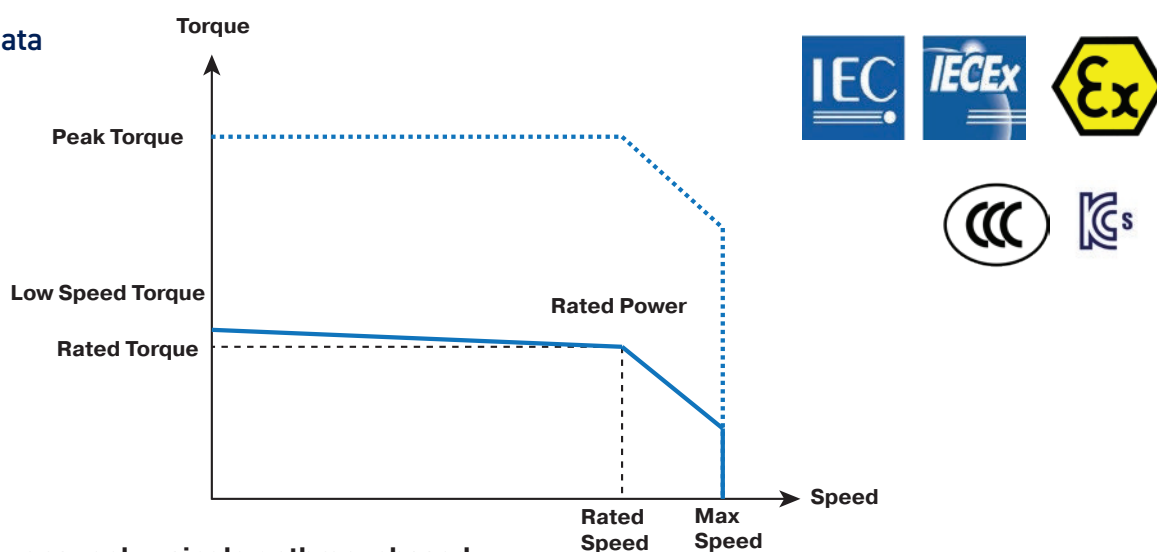
Technical Characteristics - Overview

Motor type	Permanent magnet synchronous motors
Number of poles	10
Torque range	1.6 ... 35 Nm
Speed range	1100...7600 min ⁻¹
Operating temperature	Up to +40°C (standard) Up to +60°C (with derating)
Marking*	ATEX/IECEx, KOSHA
Voltage supply	230 / 400 VAC
Conformance	ATEX 2014/34/EU Directive IEC/EN60079-0, IEC/EN60079-1 IEC/EN60079-31 standards
Classification	II 2GD Ex db IIB T4 Gb IP65 Ex tb IIIC T135 °C Db IP65 (Gas or Dust)
Ingress protection level	IP65 (standard)
Connections	Cable glands

* For CCC please see page 7

EX Servo Motors - CE Marked for Explosive Atmospheres

Technical Data



230 VAC power supply - single or three-phased

Motor	Rated Power P _n	Rated Torque M _n	Rated Speed N _n	Rated Current I _n	Low speed torque M ₀	Low Speed Current I ₀	Peak Torque M _{peak}	Peak Current I _{peak}	Max. Speed N _{max}
	[kW]	[Nm]	[rpm]	[Arms]	[Nm]	[Arms]	[Nm]	[Arms]	[rpm]
40°C ambient temperature									
EX310EAP	0.40	1.66	2300	1.2	1.75	1.2	4.2	3.1	2300
EX310EAK	0.64	1.54	4000	2.0	1.75	2.2	4.2	5.4	4000
EX420EAP	0.77	3.18	2300	2.3	3.5	2.5	8.3	6.2	2300
EX420EAJ	1.12	2.67	4000	3.3	3.5	4.3	8.3	10.7	4000
EX430EAL	1.02	4.2	2300	3.0	4.8	3.3	11.5	8.3	2300
EX430EAF	1.37	3.3	4000	4.1	4.8	5.8	11.5	14.5	4000
EX620EAV	0.76	6.6	1100	2.4	6.7	2.4	16.7	6.0	1100
EX620EAR	1.33	5.8	2200	4.0	6.7	4.5	16.7	11.2	2200
EX630EAR	1.43	9.4	1450	4.2	10.4	4.6	25.9	11.5	1450
EX630EAN	2.02	8.4	2300	5.7	10.4	6.9	25.9	17.3	2300
EX820EAR	2.57	11.2	2200	7.5	14	9.3	32.5	23.2	2200
EX840EAK	3.31	15.8	2000	9.4	24.5	14.3	58.2	35.6	2000
EX860EAJ	3.86	25.4	1450	11.5	35	15.7	83.3	39.2	1450
60°C ambient temperature									
EX310EAP	0.31	1.30	2300	0.9	1.5	1.2	4.2	3.1	2300
EX310EAK	0.40	0.95	4000	1.3	1.5	2.2	4.2	5.4	4000
EX420EAP	0.59	2.45	2300	1.8	3	2.1	7.3	5.3	2300
EX420EAJ	0.63	1.5	4000	1.9	3	3.7	7.3	9.1	4000
EX430EAL	0.82	3.4	2300	2.4	4.2	2.9	10.2	7.2	2300
EX430EAF	0.90	2.9	3000	3.6	4.2	5.1	10.2	12.7	4000
EX620EAV	0.63	5.5	1100	2.0	6	2.2	15.0	5.3	1100
EX620EAR	0.88	3.8	2200	2.8	6	4.1	15.0	9.9	2200
EX630EAR	1.12	7.35	1450	3.4	9	4.0	22.5	9.8	1450
EX630EAN	1.24	5.15	2300	3.7	9	6.1	22.5	14.7	2300
EX820EAR	1.65	8.5	1850	5.8	11	7.3	26.6	18.3	2200
EX840EAK	2.23	11.5	1850	6.9	21	12.2	51.0	30.6	2000
EX860EAJ	2.74	18.0	1450	8.3	31	13.9	75.1	34.8	1450

400 VAC power supply - single or three-phased

Motor	Rated Power Pn	Rated Torque Mn	Rated Speed Nn	Rated Current In	Low speed torque Mo	Low Speed Current Io	Peak Torque M peak	Peak Current I peak	Max. Speed N max
	[kW]	[Nm]	[rpm]	[Arms]	[Nm]	[Arms]	[Nm]	[Arms]	[rpm]
40°C ambient temperature									
EX310EAP	0.64	1.54	4000	1.1	1.75	1.2	4.2	3.1	4000
EX310EAK	0.87	1.23	6800	1.6	1.75	2.2	4.2	5.4	6800
EX420EAP	0.94	3	4000	2.1	3.5	2.5	8.3	6.2	3000
EX420EAJ	1.11	1.8	6000	2.3	3.5	4.3	8.3	10.7	6000
EX430EAL	1.37	3.3	4000	2.3	4.8	3.3	11.5	8.3	4000
EX430EAF	1.37	3.3	4000	4.1	4.8	5.8	11.5	14.5	5800
EX620EAV	1.25	6.0	2000	2.2	6.7	2.4	16.7	6.0	2000
EX620EAR	1.53	3.8	3900	2.7	6.7	4.5	16.7	11.2	3900
EX630EAR	2.19	7.8	2700	3.5	10.4	4.6	25.9	11.5	2700
EX630EAN	2.18	5.2	4000	3.8	10.4	6.9	25.9	17.3	4000
EX820EAR	2.84	7.5	3600	5.2	14	9.3	32.5	23.2	3900
EX840EAK	0.99	2.9	3300	2.1	24.5	14.3	58.2	35.6	3500
EX860EAJ	2.35	9.0	2500	4.4	35	15.7	83.3	39.2	2600
60°C ambient temperature									
EX310EAP	0.40	0.95	4000	0.7	1.5	1.2	4.2	3.1	4000
EX310EAK	0.40	0.95	4000	1.3	1.5	2.2	4.2	5.4	6800
EX420EAP	0.66	2.1	4000	1.5	3.0	2.1	7.3	5.3	3000
EX420EAJ	0.63	1.5	4000	1.9	3.0	3.7	7.3	9.1	6000
EX430EAL	0.90	2.9	3000	2.0	4.2	2.9	10.2	7.2	4000
EX430EAF	0.90	2.9	3000	3.6	4.2	5.1	10.2	12.7	4900
EX620EAV	0.88	4.2	2000	1.6	6.0	2.2	15.0	5.3	2000
EX620EAR	0.84	3.2	2500	2.4	6.0	4.1	15.0	9.9	3900
EX630EAR	1.18	4.5	2500	2.2	9.0	4.0	22.5	9.8	2700
EX630EAN	1.18	4.5	2500	3.3	9.0	6.1	22.5	14.7	4000
EX820EAR	1.65	8.5	1850	5.8	11.0	7.3	26.6	18.3	3900
EX840EAK	2.22	11.5	1850	6.9	21.0	12.2	51.0	30.6	2600
EX860EAJ	2.60	15.5	1600	7.2	31.0	13.9	75.1	34.8	2100

Drive Associations

230 VAC power supply

Motor	Associated Drive Sizes ⁽¹⁾			
	PSD1 ⁽²⁾	Compax3	SLVD-N	AC890
With 40°C ambient temperature - 230 VAC power supply				
EX310EAP	PSD1SW1200...	C3S025V2...	SLVD2N...	890SD-231300B...
EX310EAK	PSD1SW1300...	C3S025V2...	SLVD5N...	890SD-231300B...
EX420EAP	PSD1SW1300...	C3S025V2...	SLVD5N...	890SD-231550B...
EX420EAJ	PSD1SW1300...	C3S063V2...	SLVD5N...	890SD-231700B...
EX430EAL	PSD1SW1300...	C3S063V2...	SLVD5N...	890SD-231550B...
EX430EAF	-	C3S063V2...	SLVD7N...	890SD-231700B...
EX620EAV	PSD1SW1300...	C3S025V2...	SLVD5N...	890SD-231550B...
EX620EAR	PSD1SW1300...	C3S063V2...	SLVD5N...	890SD-231700B...
EX630EAR	PSD1SW1300...	C3S063V2...	SLVD5N...	890SD-231700B...
EX630EAN	-	C3S100V2...	SLVD7N...	890SD-232110B...
EX820EAR	-	C3S100V2...	SLVD10N...	890SD-232165B...
EX840EAK	-	C3S150V2...	SLVD15N...	890SD-232240C...
EX860EAJ	-	-	-	890SD-232240C...
With 60°C ambient temperature - 230 VAC power supply				
EX310EAP	PSD1SW1200...	C3S025V2...	SLVD2N...	890SD-231300B...
EX310EAK	PSD1SW1300...	C3S025V2...	SLVD5N...	890SD-231300B...
EX420EAP	PSD1SW1300...	C3S025V2...	SLVD5N...	890SD-231300B...
EX420EAJ	PSD1SW1300...	C3S063V2...	SLVD5N...	890SD-231550B...
EX430EAL	PSD1SW1300...	C3S063V2...	SLVD5N...	890SD-231550B...
EX430EAF	-	C3S063V2...	SLVD7N...	890SD-231700B...
EX620EAV	PSD1SW1300...	C3S025V2...	SLVD5N...	890SD-231300B...
EX620EAR	PSD1SW1300...	C3S063V2...	SLVD5N...	890SD-231700B...
EX630EAR	PSD1SW1300...	C3S063V2...	SLVD5N...	890SD-231550B...
EX630EAN	-	C3S063V2...	SLVD7N...	890SD-232110B...
EX820EAR	-	C3S100V2...	SLVD10N...	890SD-232110B...
EX840EAK	-	C3S150V2...	SLVD15N...	890SD-232240C...
EX860EAJ	-	C3S150V2...	SLVD15N...	890SD-232240C...

⁽¹⁾Ambient temperature for the drives is 40°C

⁽²⁾PSD drive with optional resolver board only

400 VAC power supply

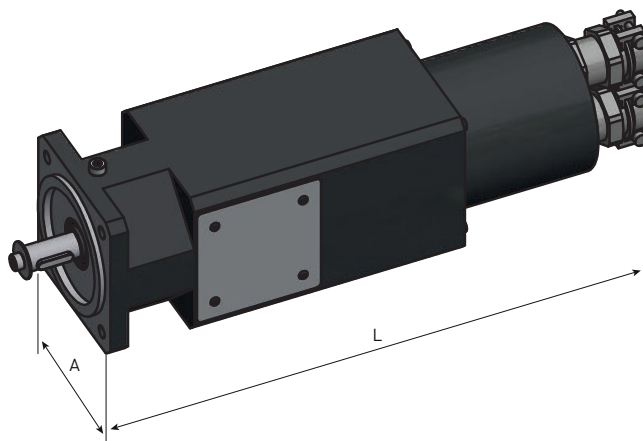
Motor	Associated Drive Sizes ⁽¹⁾			
	PSD1 ⁽²⁾	Compax3	AC890	AC30V
With 40°C ambient temperature - 400 VAC power supply				
EX310EAP	PSD1MW1300...	C3S015V4...	890SD-531200B...	31V-4D-0004
EX310EAK	PSD1MW1300...	C3S038V4...	890SD-531350B...	31V-4D-0004
EX420EAP	PSD1MW1300...	C3S038V4...	890SD-531350B...	31V-4D-0004
EX420EAJ	PSD1MW1300...	C3S075V4...	890SD-532100B...	31V-4D-0006
EX430EAL	PSD1MW1300...	C3S038V4...	890SD-531450B...	31V-4D-0005
EX430EAF	PSD1MW1400...	C3S075V4...	890SD-532100B...	31V-4D-0008
EX620EAV	PSD1MW1300...	C3S038V4...	890SD-531350B...	31V-4D-0004
EX620EAR	PSD1MW1300...	C3S075V4...	890SD-532100B...	31V-4D-0006
EX630EAR	PSD1MW1300...	C3S075V4...	890SD-532100B...	31V-4D-0008
EX630EAN	PSD1MW1400...	C3S150V4...	890SD-532120B...	31V-4D-0010
EX820EAR	PSD1MW1600...	C3S150V4...	890SD-532160B...	31V-4D-0012
EX840EAK	PSD1MW1600...	C3S150V4...	890SD-53216SB...	31V-4E-0023
EX860EAJ	PSD1MW1800...	C3S300V4...	890SD-53216SB...	31V-4E-0023
With 60°C ambient temperature - 400 VAC power supply				
EX310EAP	PSD1MW1300...	C3S015V4...	890SD-531200B...	31V-4D-0004
EX310EAK	PSD1MW1300...	C3S038V4...	890SD-531350B...	31V-4D-0004
EX420EAP	PSD1MW1300...	C3S038V4...	890SD-531350B...	31V-4D-0004
EX420EAJ	PSD1MW1300...	C3S038V4...	890SD-531600B...	31V-4D-0005
EX430EAL	PSD1MW1300...	C3S038V4...	890SD-531450B...	31V-4D-0004
EX430EAF	PSD1MW1400...	C3S075V4...	890SD-532100B...	31V-4D-0008
EX620EAV	PSD1MW1300...	C3S038V4...	890SD-531350B...	31V-4D-0004
EX620EAR	PSD1MW1300...	C3S075V4...	890SD-532100B...	31V-4D-0006
EX630EAR	PSD1MW1300...	C3S075V4...	890SD-531600B...	31V-4D-0006
EX630EAN	PSD1MW1400...	C3S075V4...	890SD-532120B...	31V-4D-0008
EX820EAR	PSD1MW1400...	C3S075V4...	890SD-532120B...	31V-4D-0010
EX840EAK	PSD1MW1600...	C3S150V4...	890SD-53216SB...	31V-4E-0016
EX860EAJ	PSD1MW1600...	C3S150V4...	890SD-53216SB...	31V-4E-0023

⁽¹⁾Ambient temperature for the drives is 40°C

⁽²⁾PSD drive with optional resolver board only

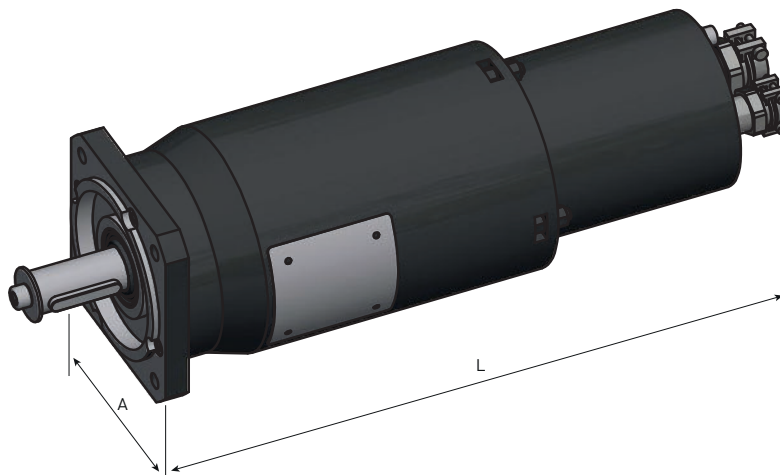
Dimensions (Resolver Version)

EX3



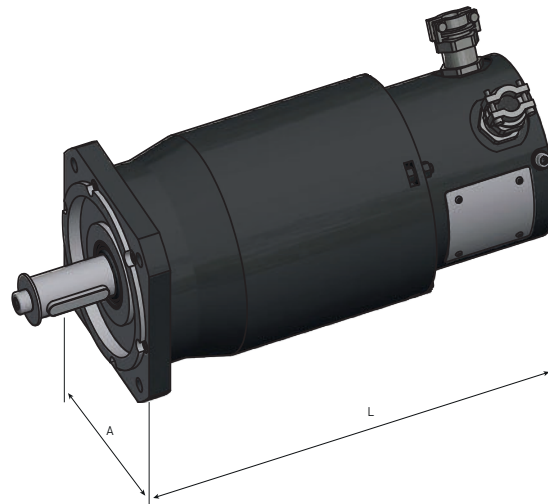
Motor	A	Mounting Flange centering / interaxis hole	Shaft diameter x length	Without Brake		With Brake	
	[mm]			[mm]	L [mm]	Weight [kg]	L [mm]
EX310	70	60 / 75	11 x 23	225	2.8	255	3.2

EX4



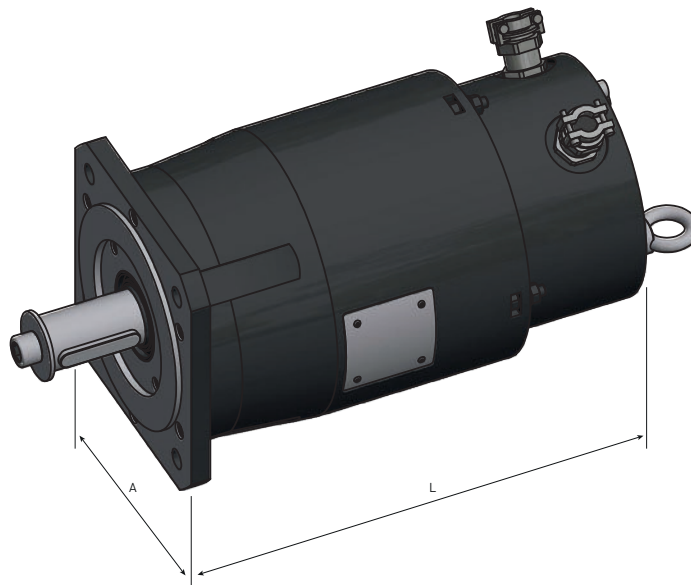
Motor	A	Mounting Flange centering / interaxis hole	Shaft diameter x length	Without Brake		With Brake	
	[mm]			[mm]	[mm]	Weight [kg]	L [mm]
EX420	92	80 / 100	19 x 40	305	7	330	8
EX430				330	8	355	9

EX6



Motor	A	Mounting Flange centering / interaxis hole [mm]	Shaft diameter x length [mm]	Without Brake		With Brake	
	[mm]			L [mm]	Weight [kg]	L [mm]	Weight [kg]
EX620	120	110 / 130	24 x 50	275	10	290	11
EX630				300	12.5	325	13.5

EX8



Motor	A	Mounting Flange centering / interaxis hole [mm]	Shaft diameter x length [mm]	Without Brake		With Brake	
	[mm]			L [mm]	Weight [kg]	L [mm]	Weight [kg]
EX820	155	130 / 165	32 x 58	325	22	360	25
EX840				385	28	420	31
EX860				445	38	480	41

Order Code

EX Motors - CE Marked

	1	2	3	4	5	6	7	8	9	10	11	12
Order example	EX	3	10	E	A	P	B	1	2	1	1	-

1 Product Series	EX	Atex servo motor Zone 1
2 Motor size	3	70 mm square
	4	92 mm square
	6	120 mm square
	8	155 mm square
3 Motor length	10	up to 60 depending on size
4 Fixed code	E	ATEX/IECEX/KOSHA/CCC motor
5 Feedback sensor	A	2 pole resolver (standard)
	K	Without feedback sensor
	P	Absolute singleturn HIPERFACE DSL® EKS36 Encoder
	Q	Absolute multiturn HIPERFACE DSL® EKM36 Encoder
	R	Absolute singleturn HIPERFACE SKS36 Encoder (128 periods/rev)
	S	Absolute multiturn HIPERFACE SKM36 Encoder (128 periods/rev)
6 Torque/Speed characteristics		see table "Technical data"
...		
7 Painting	B	Black RAL9005
8 Electric connection	1	Cable gland
9 Brake	2	Motor without brake (standard) + thermal switch sensor
	5	Motor with brake + thermal switch sensor
10 Ingress protection level	1	IP65 (standard)
11 Shaft end	0	Smooth shaft (standard)
	1	Key shaft
12 Nameplate	-	ATEX/IECEX/KOSHA
	C	CCC certification

Cables

Motor cable

Drive	Cable reference	
	Current ≤ 12 A @40°C ambient t° Current ≤ 9 A @60°C ambient t°	Current ≤ 24 A @40°C ambient t° Current ≤ 17 A @60°C ambient t°
Cable for use with Hiperface DSL® feedback (single cable)		
PSD1S, PSD1M18	CBM015TD-T03-D01-xxxx-00	-
PSD1M (except M18)	CBM015TD-T03-D02-xxxx-00	-
Cable for use with other feedback		
PSD1	Consult us	
Compax3	CC3UQ1D1Rxxxx	CC3UQ2D1Rxxxx
SLVDN	CS5UQ1D1R0xxx	CS5UQ2D1R0xxx
AC890	CS4UQ1D1Rxxxx	CS4UQ2D1Rxxxx

Feedback cable

Drive	Cable reference	
	2 pole resolver	Hiperface
PSD1	CBFRE0T0-T05-D03-xxxx-00	-
Compax3	CC3UA1D1Rxxxx	CC3UR1D1Rxxxx
SLVDN	CS5UA1D1R0xxx	-
AC890	CS4UA1D1Rxxxx	-

For non-standard length cable with length different from: 3/5/10/15/20/25/30/50m please contact us.

To note that these cables have a surface temperature resistance of 100°C.

Additional Information

Feedback Sensors

2 poles resolver - option A

- Accuracy: $\pm 10'$ max
- Transformation ratio: $0.5 \pm 5\%$
- Max. operating speed: $17\,000\text{ min}^{-1}$
- Working temperature range: $-55\dots+155\text{ }^\circ\text{C}$

Single turn / Multiturn absolute encoder HIPERFACE SKS/SKM36 - option R/S

- Number of sine/cosine periods per revolution: 128
- Absolute position per revolution: 4096 (12 bits)
- Number of absolutely encodable revolutions: 4096 (SKM36)
- Max. operating speed SKS36: $12\,000\text{ min}^{-1}$
- Max. operating speed SKM36: $9\,000\text{ min}^{-1}$
- Working temperature range: $-20\dots+110\text{ }^\circ\text{C}$

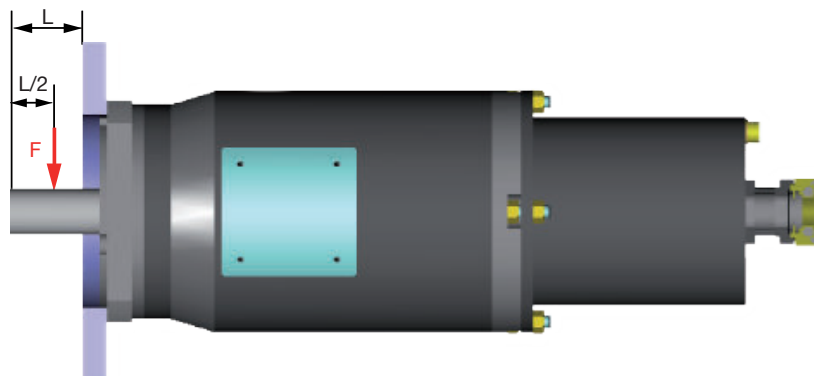
Single turn / Multiturn absolute encoder HIPERFACE DSL® EKS/EKM36 - option P/Q

- Absolute position per revolution: 4096 (18/20 bits)
- Number of absolutely encodable revolutions: 4096 (EKM36)
- Max. operating speed EKS36: $12\,000\text{ min}^{-1}$
- Max. operating speed EKM36: $9\,000\text{ min}^{-1}$
- Working temperature range: $-20\dots+115\text{ }^\circ\text{C}$
- SIL2 certified

Shaft Loads for CE Motors

Maximum load acceptable on the shaft

The values written in the table are given for a load placed on the middle of the shaft like the picture below.



Due to the small ATEX airgap requirements between the shaft and the front flange, the radial loads on the shaft are lower than standard NX motors.

The ATEX airgap requirements depend on the volume of the motor and can lead to lower radial loads for bigger motors.

Regarding to these shaft loads, you must not use a pulley belt system without a load take-up system.

Type	Max. shaft load F [N]
EX310	100
EX430	500
EX630	500
EX860	250



Parker's Motion & Control Technologies

At Parker, we're guided by a relentless drive to help our customers become more productive and achieve higher levels of profitability by engineering the best systems for their requirements. It means looking at customer applications from many angles to find new ways to create value. Whatever the motion and control technology need, Parker has the experience, breadth of product and global reach to consistently deliver. No company knows more about motion and control technology than Parker. For further info call 00800 27 27 5374



Aerospace

Key Markets

Aftermarket services
Commercial transports
Engines
General & business aviation
Helicopters
Launch vehicles
Military aircraft
Missiles
Power generation
Regional transports
Unmanned aerial vehicles

Key Products

Control systems & actuation products
Engine systems & components
Fluid conveyance systems & components
Fluid metering, delivery & atomization devices
Fuel systems & components
Fuel tank inerting systems
Hydraulic systems & components
Thermal management
Wheels & brakes



Climate Control

Key Markets

Agriculture
Air conditioning
Construction Machinery
Food & beverage
Industrial machinery
Life sciences
Oil & gas
Precision cooling
Process
Refrigeration
Transportation

Key Products

Accumulators
Advanced actuators
CO₂ controls
Electronic controllers
Filter driers
Hand shut-off valves
Heat exchangers
Hose & fittings
Pressure regulating valves
Refrigerant distributors
Safety relief valves
Smart pumps
Solenoid valves
Thermostatic expansion valves



Electromechanical

Key Markets

Aerospace
Factory automation
Life science & medical
Machine tools
Packaging machinery
Paper machinery
Plastics machinery & converting
Primary metals
Semiconductor & electronics
Textile
Wire & cable

Key Products

AC/DC drives & systems
Electric actuators, gantry robots & slides
Electrohydraulic actuation systems
Electromechanical actuation systems
Human machine interface
Linear motors
Stepper motors, servo motors, drives & controls
Structural extrusions



Filtration

Key Markets

Aerospace
Food & beverage
Industrial plant & equipment
Life sciences
Marine
Mobile equipment
Oil & gas
Power generation & renewable energy
Process
Transportation
Water Purification

Key Products

Analytical gas generators
Compressed air filters & dryers
Engine air, coolant, fuel & oil filtration systems
Fluid condition monitoring systems
Hydraulic & lubrication filters
Hydrogen, nitrogen & zero air generators
Instrumentation filters
Membrane & fiber filters
Microfiltration
Sterile air filtration
Water desalination & purification filters & systems



Fluid & Gas Handling

Key Markets

Aerial lift
Agriculture
Bulk chemical handling
Construction machinery
Food & beverage
Fuel & gas delivery
Industrial machinery
Life sciences
Marine
Mining
Mobile
Oil & gas
Renewable energy
Transportation

Key Products

Check valves
Connectors for low pressure fluid conveyance
Deep sea umbilicals
Diagnostic equipment
Hose couplings
Industrial hose
Mooring systems & power cables
PTFE hose & tubing
Quick couplings
Rubber & thermoplastic hose
Tube fittings & adapters
Tubing & plastic fittings



Hydraulics

Key Markets

Aerial lift
Agriculture
Alternative energy
Construction machinery
Forestry
Industrial machinery
Machine tools
Marine
Material handling
Mining
Oil & gas
Power generation
Refuse vehicles
Renewable energy
Truck hydraulics
Turf equipment

Key Products

Accumulators
Cartridge valves
Electrohydraulic actuators
Human machine interfaces
Hybrid drives
Hydraulic cylinders
Hydraulic motors & pumps
Hydraulic systems
Hydraulic valves & controls
Hydrostatic steering
Integrated hydraulic circuits
Power take-offs
Power units
Rotary actuators
Sensors



Pneumatics

Key Markets

Aerospace
Conveyor & material handling
Factory automation
Life science & medical
Machine tools
Packaging machinery
Transportation & automotive

Key Products

Air preparation
Brass fittings & valves
Manifolds
Pneumatic accessories
Pneumatic actuators & grippers
Pneumatic valves & controls
Quick disconnects
Rotary actuators
Rubber & thermoplastic hose & couplings
Structural extrusions
Thermoplastic tubing & fittings
Vacuum generators, cups & sensors



Process Control

Key Markets

Alternative fuels
Biopharmaceuticals
Chemical & refining
Food & beverage
Marine & shipbuilding
Medical & dental
Microelectronics
Nuclear Power
Offshore oil exploration
Oil & gas
Pharmaceuticals
Power generation
Pulp & paper
Steel
Water/wastewater

Key Products

Analytical Instruments
Analytical sample conditioning products & systems
Chemical injection fittings & valves
Fluoropolymer chemical delivery fittings, valves & pumps
High purity gas delivery fittings, valves, regulators & digital flow controllers
Industrial mass flow meters/controllers
Permanent no-weld tube fittings
Precision industrial regulators & flow controllers
Process control double block & bleeds
Process control fittings, valves, regulators & manifold valves



Sealing & Shielding

Key Markets

Aerospace
Chemical processing
Consumer
Fluid power
General Industrial
Information technology
Life sciences
Microelectronics
Military
Oil & gas
Power generation
Renewable energy
Telecommunications
Transportation

Key Products

Dynamic seals
Elastomeric o-rings
Electro-medical instrument design & assembly
EMI shielding
Extruded & precision-cut, fabricated elastomeric seals
High temperature metal seals
Homogeneous & inserted elastomeric shapes
Medical device fabrication & assembly
Metal & plastic retained composite seals
Shielded optical windows
Silicone tubing & extrusions
Thermal management
Vibration dampening

www.parker.com



European Headquarters
La Tuilière 6, 1163 Etoy,
Switzerland
Tel: +41 21 821 85 00

Your authorized distributor